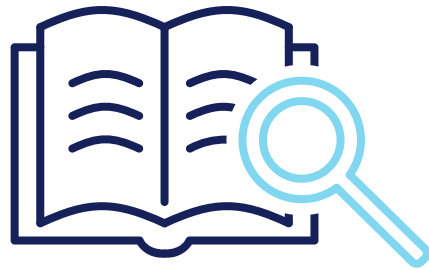




Last updated
January 2024

Sustainable Shipping Initiative (SSI)

Membership information pack



1. About SSI
2. Our roadmap
3. Our work
4. Getting involved

Who we are

The Sustainable Shipping Initiative (SSI) is a multi-stakeholder collective that brings together leaders across the entire shipping ecosystem to catalyse change and contribute to a more sustainable maritime industry.



A holistic view of sustainability

We recognise that cross-cutting approaches are needed to enable an environmentally, socially, and socioeconomically sustainable shipping industry.



Partnering for impact

We seek to collaborate with others in the maritime space and beyond, identify emerging issues and deepen engagement with existing initiatives.



Evidence-based inquiry

We publish and share valuable insights on how the shipping industry can address its sustainability challenges; all our outputs are public and freely available.



Our members

SSI members operate across the maritime ecosystem, from shipowners and managers to charterers, ports, NGOs, etc.



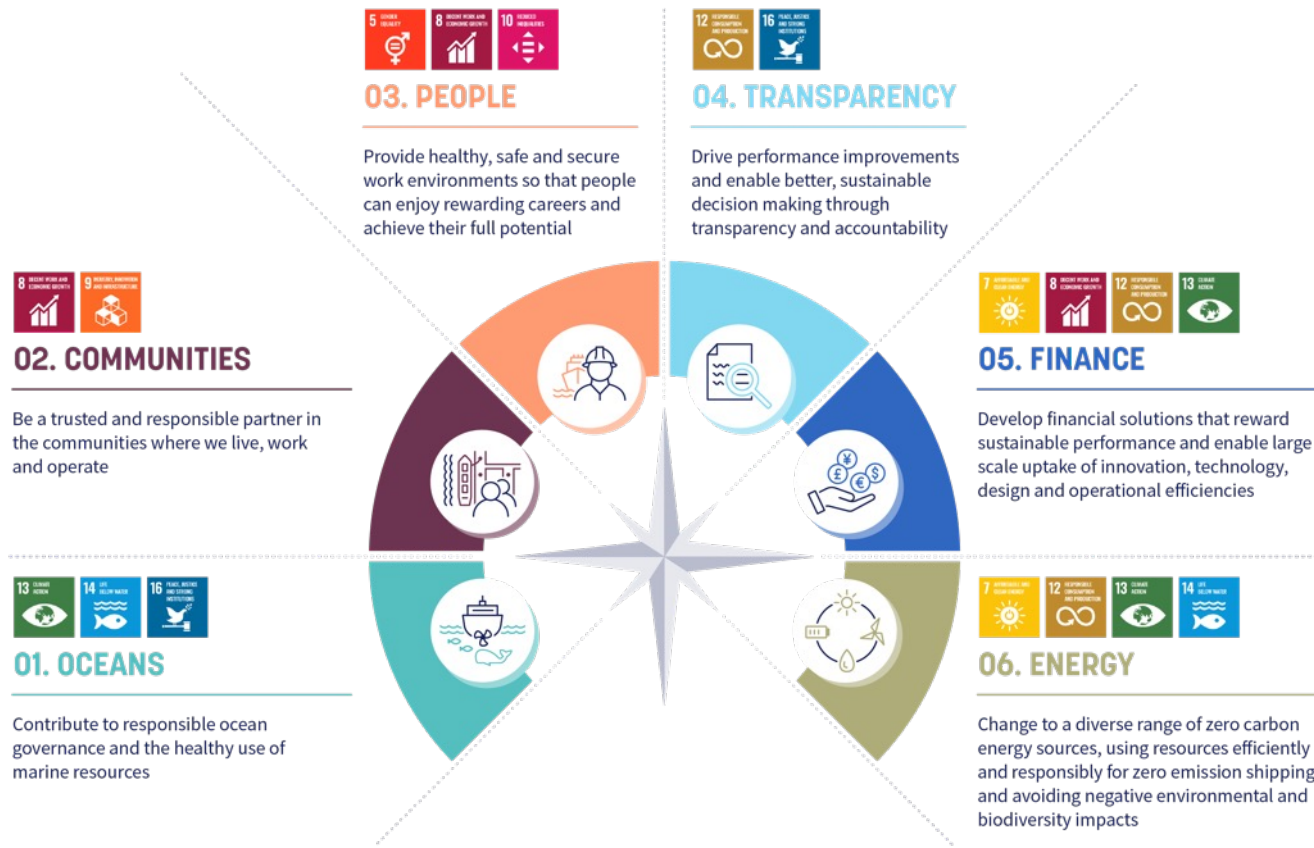
Governance

The Sustainable Shipping Initiative (SSI) is a UK registered charity, since 2013. It is governed by a [Board of Trustees](#).

Funding for SSI comes from annual member fees as well as external funding (e.g. from foundations) for individual projects.



Roadmap to a sustainable shipping industry



- The [*Roadmap to a sustainable shipping industry*](#) acts as a compass for SSI members and the wider industry, by scanning for emerging issues as well as mapping long-term transformation.
- The *Roadmap* defines tangible milestones to be collectively achieved over the coming decades, across intersecting vision areas.
- As a practical toolkit for the industry and a call to action, the *Roadmap* offers stakeholders multiple pathways to navigate the sustainability transition.

Roadmap to a sustainable shipping industry

Each vision area has a periodically updated set of milestones that harmonise with the Sustainable Development Goals.



The Oceans vision area shown as an example. The current roadmap can be viewed [here](#).



Our work

Our current programmes



Decarbonisation (est. 2018)

Objective: To ensure shipping's sustainable decarbonisation by shining a light on emerging issues and taking a holistic view of what is needed to transition shipping to a sustainable, zero emission future.

Projects:

[Sustainability criteria for marine fuels](#) (Ongoing)

[Shipping's transition to a circular industry](#) (Ongoing)

[Sustainable biofuels for shipping](#) (2018-2021)



Human side of shipping (est. 2020)

Objective: To support those impacted by shipping's activities (such as seafarers, shipyard and port workers, coastal communities) by developing knowledge and tools that enable a healthy, safe and secure work and living environment for all.

Projects:

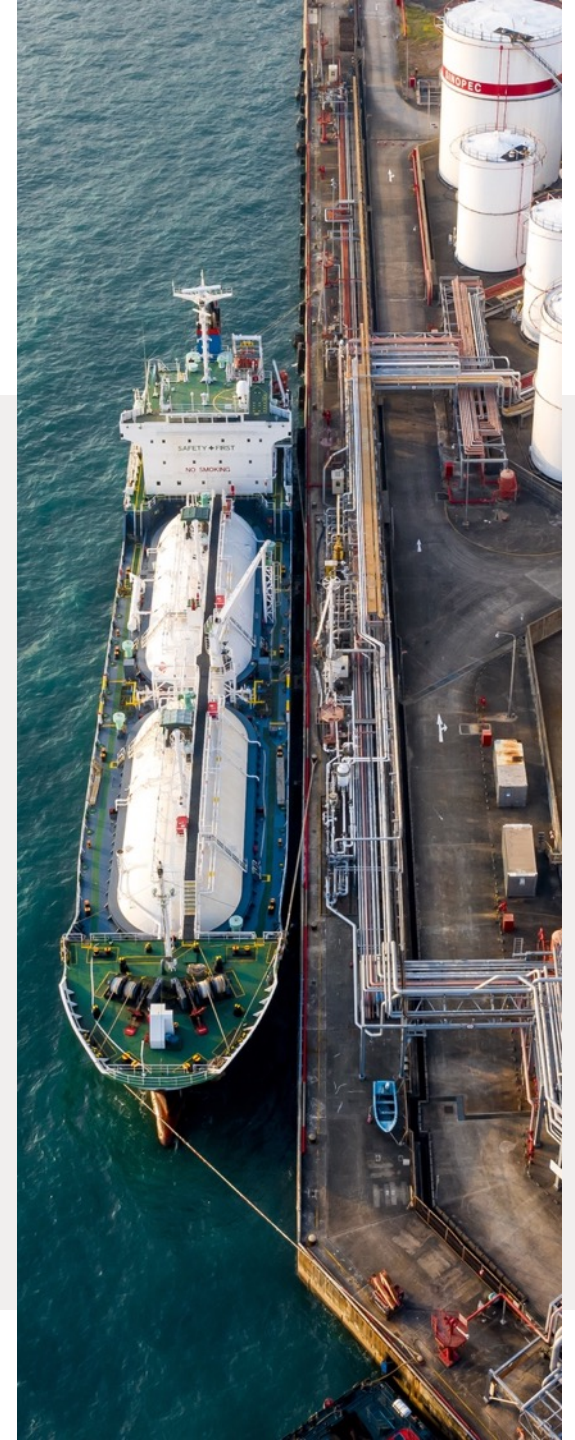
[Delivering on seafarers' rights](#) (Ongoing)



Sustainability criteria for marine fuels

2020 - Present

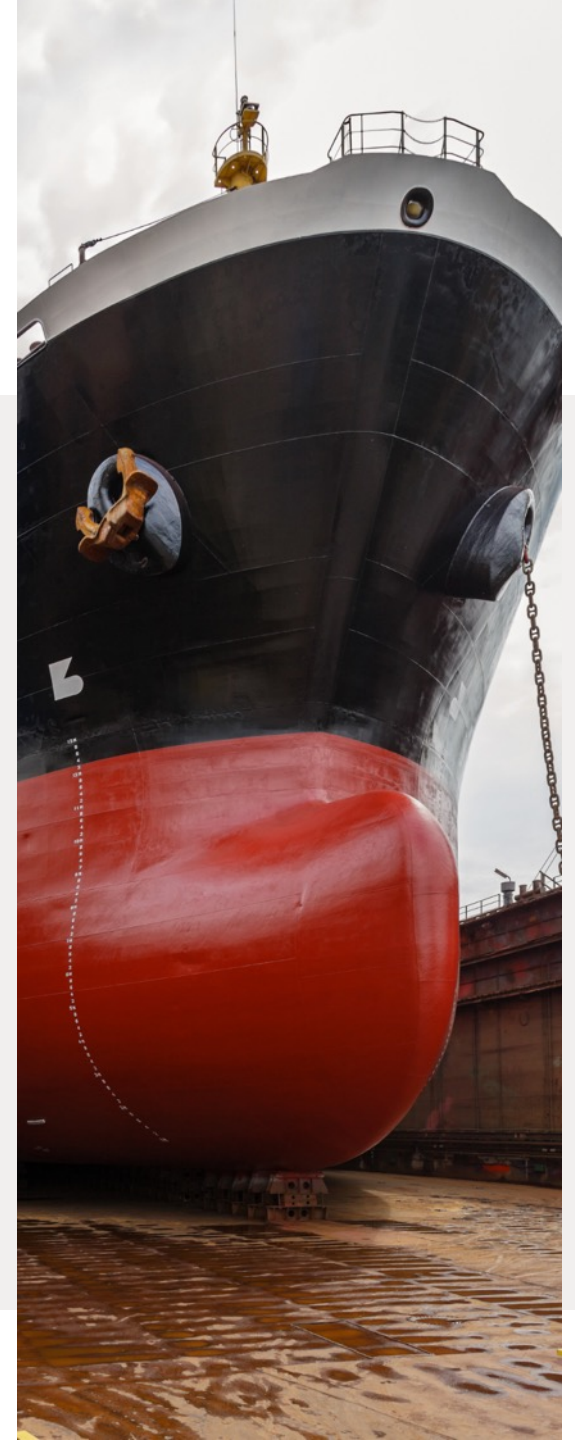
- **Intended impact:** The shipping sector's future fuels of choice are environmentally, socially, and socioeconomically sustainable.
- **Objective:** Actors across the maritime fuel value chain better understand fuel sustainability impact areas and promote sustainable methods of production, distribution, bunkering, etc.
- **Publications:** [White paper](#) (February 2021); [Defining sustainability criteria for marine fuels report](#) (September 2021).
- **Next steps:** Further testing and building on the criteria with members and partners; implementing the criteria in forward-looking projects including green corridors.



Ship lifecycle

2021 - Present

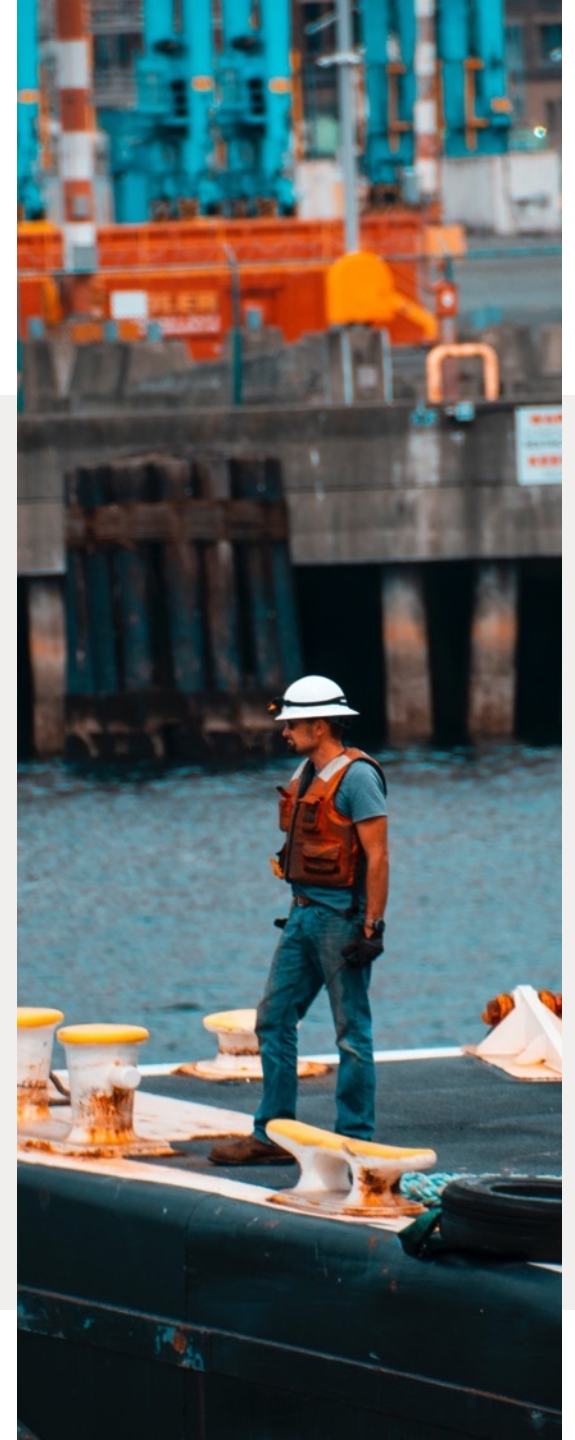
- **Intended impact:** Ships are built, operated and recycled with sustainability in mind.
- **Objective:** Actors across the shipping value chain understand the sustainability impact of shipbuilding materials and promote a more circular ship lifecycle through rethinking material flows.
- **Outputs to date:** [Exploring shipping's transition to a circular industry report](#) (June 2021); [Green steel and shipping](#) (June 2023).
- **Next steps:** Engagement with steel producers and shipbuilding facilities and exploration on how to account for the Net Loop.



Delivering on seafarers' rights

2020 - Present

- **Intended impact:** Seafarers' rights are promoted and upheld, improving working conditions and ensuring equal treatment for workers at sea and ashore.
- **Objective:** Actors across the maritime value chain better understand and comply with seafarers' rights, including and going beyond the Maritime Labour Convention (ILO MLC).
- **Outputs to date:** [Code of Conduct](#), [Self-assessment questionnaire](#) (October 2021); [progress report](#) (October 2022).
- **Next steps:** Engagement with seafarer organisations to increase awareness of Code of Conduct; work to improve verification and transparency; review of Code of Conduct and questionnaire.



Industry engagement

SSI engages with industry in multiple ways, through knowledge partnerships, working group participation, and in-kind support to initiatives, non-profits, academic institutions and others with similar objectives of creating a more sustainable maritime sector.

Among others, SSI has taken part in working groups for the Climate Bonds Initiative's shipping criteria, the Science-Based Targets Initiative's maritime guidance, and the SASB marine transportation standard.

SSI is a knowledge partner of:

- Blue Sky Maritime Coalition
- Getting to Zero Coalition
- Mærsk McKinney Møller Center for Zero Carbon Shipping

SSI is a member of:

- The Roundtable on Sustainable Biomaterials (RSB)

SSI additionally participates in:

- The UN Global Compact Ocean Stewardship Coalition
- The Just Transition Maritime Task Force Peer Learning Group





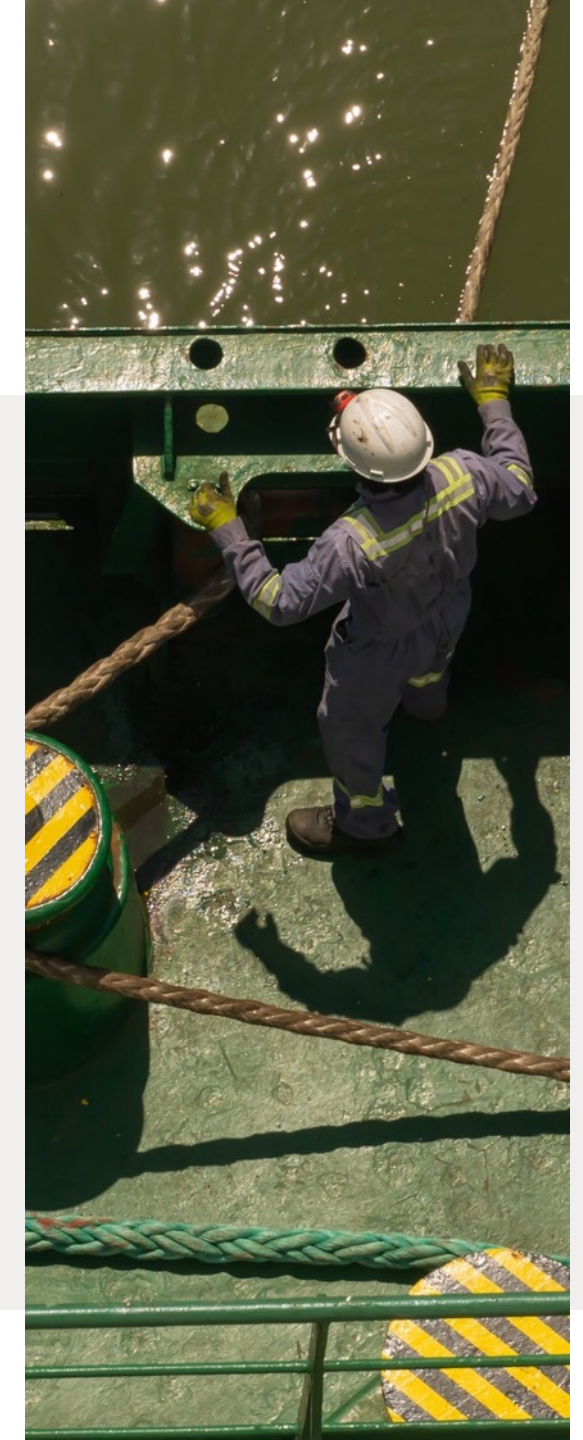
Getting involved

Joining SSI

	Working Group participation	Member meeting participation	AGM voting rights	Annual fees*
Member	Yes, any/all	Yes	Yes	Annual revenue >500M: USD 30,000 Annual revenue <500M: USD 25,000
Associate member	Yes, any/all	Yes	No	Annual revenue >500M: USD 25,000 Annual revenue <500M: USD 20,000
Knowledge partner	Yes, any/all	No	No	No
Project Partner	Yes, one	No	No	No
Outreach partner	No	No	No	No
Sponsor	No	No	No	No**

*Registered NGOs do not pay membership fees at any level.

**Sponsors do not pay a pre-defined annual fee. However, attaining the “Sponsor” tier at SSI is dependent on an existing funding relationship (at an agreed level between SSI and the proposed sponsor).



Membership* benefits

*This refers to joining SSI as a *member* or *associate member*



A tight-knit community for sustainability

Members join a close and trusted environment where industry leaders come together to learn as well as share knowledge and experiences, driving cross-value chain insights and creating value greater than the sum of its parts.



Working group engagement

Members may join working groups based on priorities and interest. Working groups seek to tackle key and emerging issues within the sector, bringing together members to generate new knowledge and research to benefit the sector.



Stay up to date on sustainable shipping

SSI stays engaged with the industry, as partners in key initiatives, speakers at events and as a voice for sustainability in the sector. Members gain insights from SSI's engagements and stay informed on the world of sustainable shipping.





Member* obligations

*This refers to joining SSI as a *member* or *associate member*



The **shared commitments** provide a baseline for industry leadership, including commitments to a sustainability strategy, sustainability reporting, as well as environmental targets. All members sign the shared commitments on joining SSI and these are reviewed periodically.

A **primary representative** ensures continuity in learning and contribution to SSI's work. Additional representatives may be assigned based on area of expertise.

Active engagement is at the core of SSI membership – through working group participation, member meeting attendance, hosting of meetings, as well as the ambassadorship of SSI through, for example, public promotion as well as introduction of potential members and/or partners to SSI.



Member* meetings

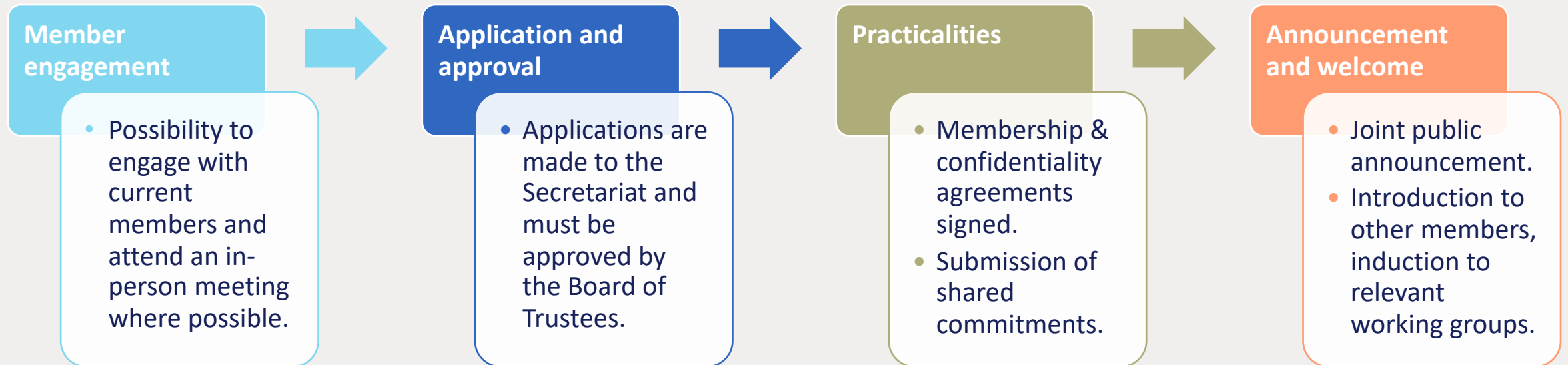
*This refers to joining SSI as a *member* or *associate member*

- Members and associate members come together in person **twice a year at a two-day gathering.**
 - Meetings are hosted by members and associate members, providing an opportunity to promote their own organisation, ongoing work on sustainability and local networks engaged in shipping.
 - In-person meetings are opportunities to reflect on progress, explore focus areas, and identify next steps across SSI's work through workshops, guest speakers and a member dinner, among others.
- **Quarterly virtual meetings** bring member and industry insights as well as opportunities for members to raise new topics for discussion. Virtual meetings take place twice in the same day to accommodate multiple time zones.
- All SSI meetings take place in compliance with SSI's anti-trust policy and under Chatham House rules.



Becoming a member*

*This refers to joining SSI as a *member* or *associate member*



Membership fees

Member	Annual revenue >500M: USD 30,000 Annual revenue <500M: USD 25,000
Associate member	Annual revenue >500M: USD 25,000 Annual revenue <500M: USD 20,000

- **Invoicing period:** Invoicing takes place in December for the following year. Fees are pro-rated for members joining part of the way through a year.
- **NGO members:** NGOs are not required to pay any annual fees. This is subject to the organisation providing proof of registered charity or non-profit status.
- **1st year fee level:** New members benefit from an introductory discount of USD 5,000 for the first 12 months of membership.
- **Affiliate members:** Where an affiliate / group company of an existing member or associate member wishes to join the SSI, it may join (subject to Board approval) at the same level of membership and will contribute an affiliate member annual fee of USD 10,000. This applies to maximum one affiliate / group company per incumbent member.
- **Member referral:** Members receive a 10% discount off their next annual fee invoice for referring and securing new fee-paying members.



Contact us for more information

E info@sustainableshipping.org

W sustainableshipping.org

